

# C A M B R I D G E

## MODEL CWM-1A, CWM-1B, SSCWM-1A AND SSCWM-1B SERIES WEIGH MOUNT SCALES



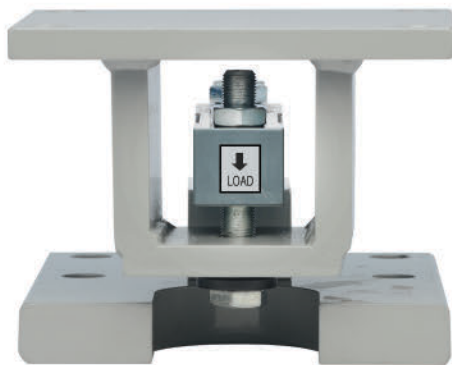
### Powder Coated Carbon Steel and 304 Stainless Steel Weigh Mount Systems

The engineers at Cambridge Scale Works had the installers and maintenance personnel in mind every step of the way during the design of our weigh mount system.

The "thru-bolt" mounting plate design permits a full one half inch adjustment up or down, eliminating the need to shim, and compensating for uneven floors.

The lag bolt holes are spaced farther apart to reduce the risk of concrete breakage when drilling mounting holes. These same lag bolt holes are also positioned to permit access with a lug wrench to all four holes.

These design innovations and Cambridge's reputation for quality make our weigh mount system your best choice.



### Approvals:



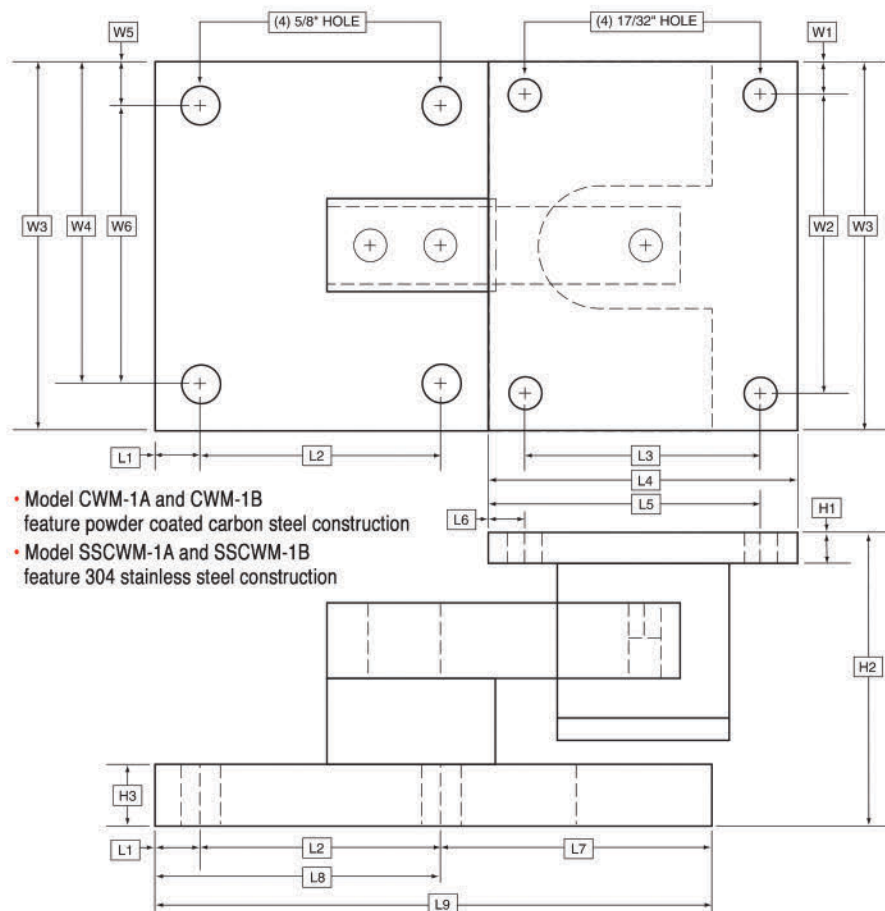
### Members:

- THE NATIONAL CONFERENCE ON WEIGHTS AND MEASURES
- THE INTERNATIONAL SOCIETY OF WEIGHING AND MEASUREMENT

# CAMBRIDGE

## MODEL CWM-1A, CWM-1B, SSCWM-1A AND SSCWM-1B SERIES WEIGH MOUNT SCALES

### DIMENSIONS



- Model CWM-1A and CWM-1B feature powder coated carbon steel construction
- Model SSCWM-1A and SSCWM-1B feature 304 stainless steel construction

### CAMBRIDGE SCALE WORKS LINE OF INDICATORS

Available in Stainless Steel Models



CSW-10AT



CSW-15AT  
Stainless Steel not Available



CSW-20AT

MODEL	CAPACITY	W1	W2	W3	W4	W5	W6	L1	L2	L3	L4	L5	L6	L7	L8	L9	H1	H2	H3
CWM-1A SSCWM-1A	500lb - 5KSE	.5"	5"	6"	5.25"	.75"	4.5"	.75"	3"	4"	5"	4.5"	.5"	3.75"	3.75"	7.5"	.5"	5.25" / 5.75"	1"
CWM-1B SSCWM-1B	5KLE - 10K	.5"	5"	6"	5.25"	.75"	4.5"	.75"	3"	4"	5"	4.5"	.5"	5.25"	3.75"	9"	.5"	5.375" / 5.625"	1"

Consult factory for custom sizes and capacities • Specifications subject to change without notice

Distributed By:

Cambridge Scale Works, Inc.  
will warrant this product for  
one full year against defects in  
material and/or workmanship.



**Cambridge Scale Works, Inc. • P O Box 670 • Honey Brook, PA 19344**  
**(800) 292-7640 • (610) 273-7040 • [www.cambridgescale.com](http://www.cambridgescale.com)**

© 2019 Cambridge Scale Works, Inc 12/2019